



WHAT SHAPE IS YOUR CHEESE?

MOLDS & PRESSES



WAYS THAT CURDS ARE FORMED

- CHEESE CLOTH
- DRAINING BASKETS
- MOLDS FOR CURDS
- PRESSING

CHEESE CLOTH VS BUTTER MUSLIN

- CHEESECLOTH

- LOOSER WEAVE
- BETTER AIRFLOW FOR DRYING
- GOOD FOR BANDAGING



- BUTTER MUSLIN

- TIGHTER WEAVE - 90 THREADS/IN
- GREAT FOR DRAINING SOFT CURDS, YOGURT
- REUSABLE MANY TIMES IF WASHED PROPERLY

- GREAT FOR:

- YOGURT, CHEVRE, FRESH CHEESE, RICOTTA, ALMOST ANYTHING
- LINING MOLDS FOR PRESSING



DRAINING BASKETS

- PLASTIC OPEN WEAVE
- MANY SHAPES
- GOOD FOR DRAINING BUT NOT PRESSING
- SIZE WILL DEPEND UPON HOW MUCH CURDS YOU HAVE
- THE MOLD MAY HAVE SPECIALIZED IMPRESSIONS
 - CANESTRATO
 - BASKET WEAVE



MOLDS FOR DRAINING AND PRESSING

- STAINLESS STEEL OR FOOD GRADE PLASTIC
- CAN BE:
 - OPEN BOTH ENDS
 - CLOSED BOTTOM WITH DRAINING HOLES
 - MAY HAVE A “FOLLOWER” FOR PRESSING
- MANY TIMES YOU WILL WANT TO LINE THE MOLD WITH CHEESECLOTH PRIOR TO FILLING



OPEN MOLDS

- MAY HAVE A FOLLOWER BUT GENERALLY USED TO DRAIN CURDS INTO A SHAPE BY THEIR OWN WEIGHT.
- USE WITH A CHEESE MAT
- DRAIN AND FLIP
- BRIE & CAMEMBERT ARE COMMON USES
- CAN MAKE YOUR OWN BUT USE FOOD GRADE PLASTIC



CLOSED BOTTOM MOLDS

- USED WHEN GOING TO PRESS THE CURDS
- THE FOLLOWER CAN BE FLAT OR SHAPED
- STRAIGHT FOR HIGHER PRESSING WEIGHT



TOMME MOLD
CLOSED BOTTOM, TAPERED



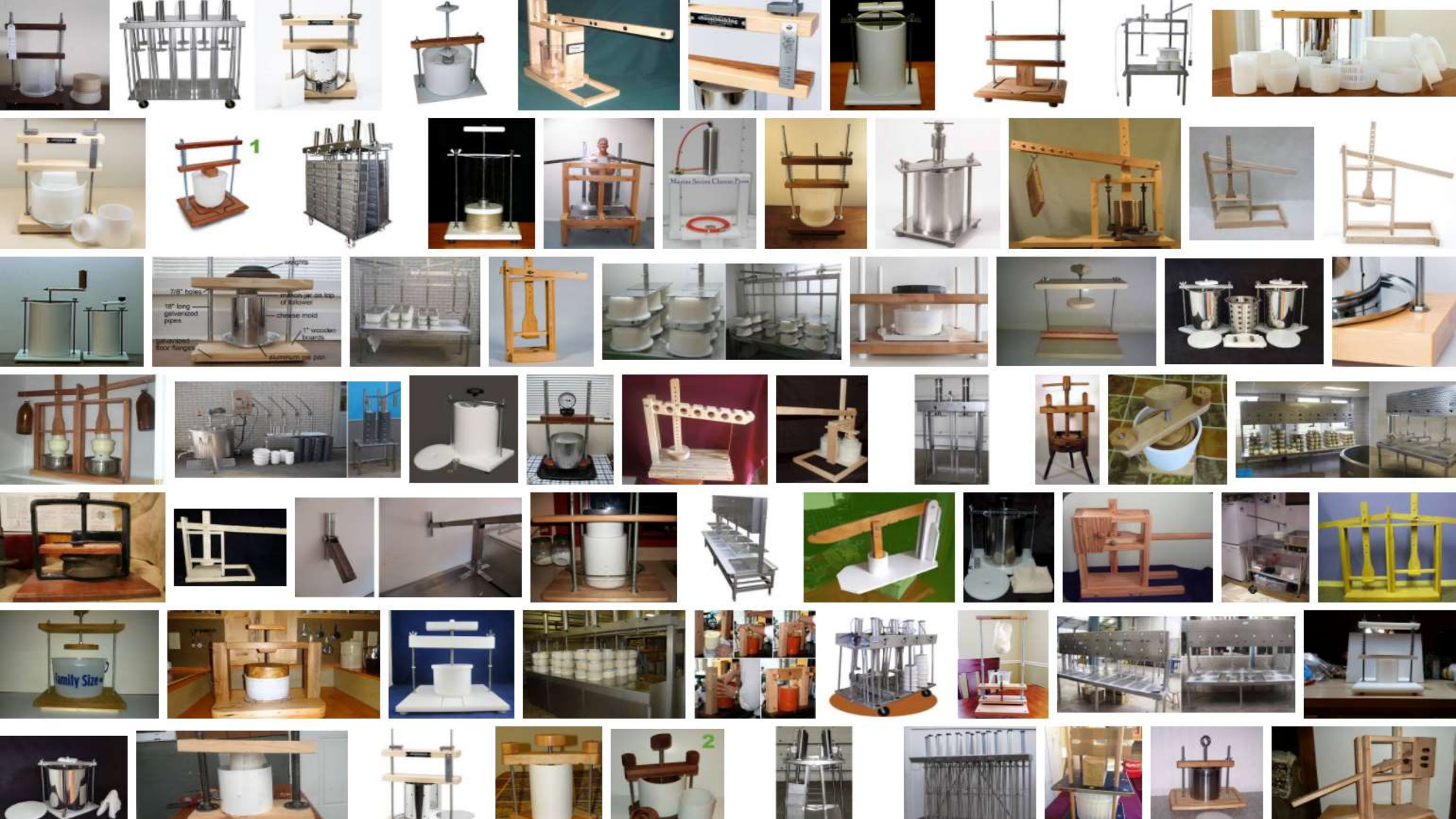
HARD CHEESE MOLD
CLOSED BOTTOM
STRAIGHT

CHOOSING A MOLD

- YOU DON'T HAVE TO OWN EVERY MOLD AVAILABLE
- PICK A MOLD THAT'S CORRECT FOR YOUR CHEESE IN TERMS OF HEIGHT AND WIDTH
 - THINK BRIE VS. CHEDDAR
- PICK A SIZE THAT'S GOOD FOR THE AMOUNT OF CHEESE YOU'RE MAKING
 - THEY USUALLY COME IN DIFFERENT DIAMETERS AND HEIGHTS TO SUIT YOUR NEED.
- MAKE A MOLD IF YOU DON'T HAVE ONE
 - I MADE A FETA DRAINING BASKET FROM A RECTANGULAR TUPPERWARE

SOME PRESSING ISSUES

- MANY CHEESES REQUIRE SOME AMOUNT OF PRESSING
- PRESSING
 - EXPRESSES MORE WHEY AND MOISTURE MAKING IT MORE SUITABLE FOR AGING
 - HELPS KNIT THE CURDS INTO A TIGHT PASTE OR TEXTURE
 - TIGHTER KNIT ELIMINATES PLACES FOR WHEY TO GATHER AND CREATE GAPS, DISCOLORATION AND HOLES.
- THERE'S ALMOST AN UNLIMITED WAY TO MAKE PRESSES
 - VEGETABLE CANS WITH A PLASTIC PLATE FOLLOWER TO HYDRAULIC SYSTEMS



THINGS TO CONSIDER WITH PRESSES AND PRESSING

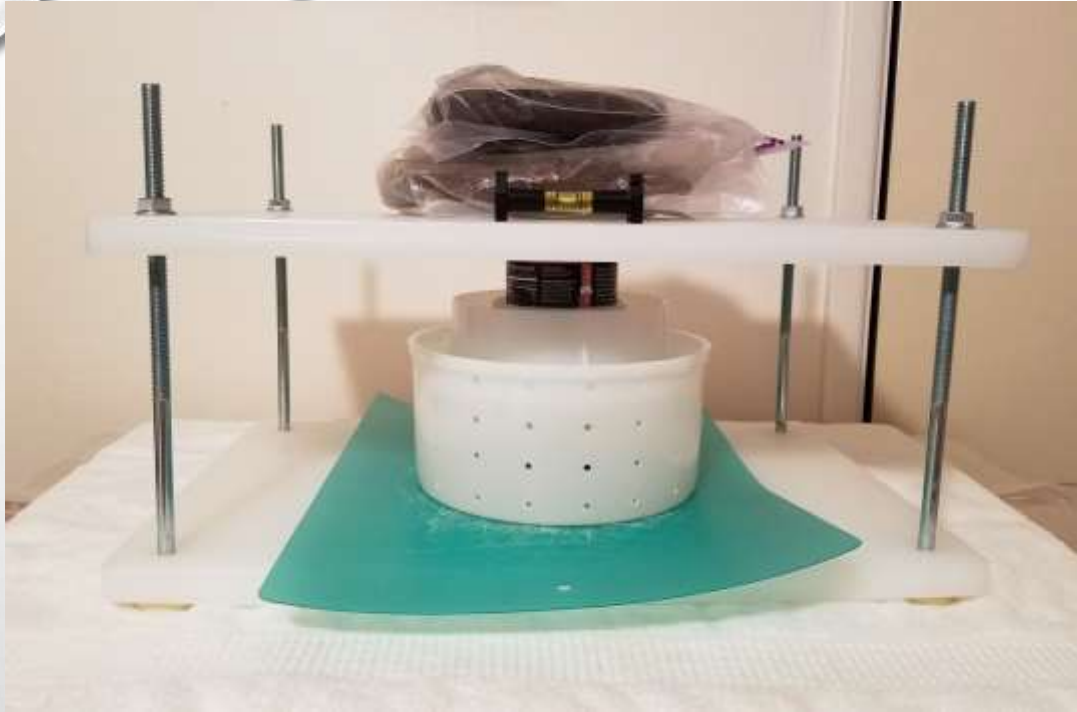
- THE GOAL IS TO APPLY THE AMOUNT OF PRESSURE NEEDED TO ACHIEVE YOUR GOAL
- RELAX, DON'T WORRY, HAVE A HOMEBREW
- YOU CAN USE A STRAIGHT PRESS WITH THE DESIRED WEIGHTS PLACED DIRECTLY ON THE FOLLOWER.
- YOU CAN USE THE “MECHANICAL ADVANTAGE” OF A PRESS WITH A PIVOT ARM
 - THIS ALLOWS YOU TO APPLY MORE PRESSURE WITH LESS WEIGHT

SIMPLE PRESS

- EASY TO MAKE
- THE PRESSURE YOU NEED IS THE PRESSURE YOU APPLY
- MORE DIFFICULT FOR WEIGHTS OVER 40#
- GOOD FOR ONE MOLD OR TWO STACKED
- MUST MAKE SURE THE BALANCE IS CORRECT



Marci's Press



Soup can inside the follower



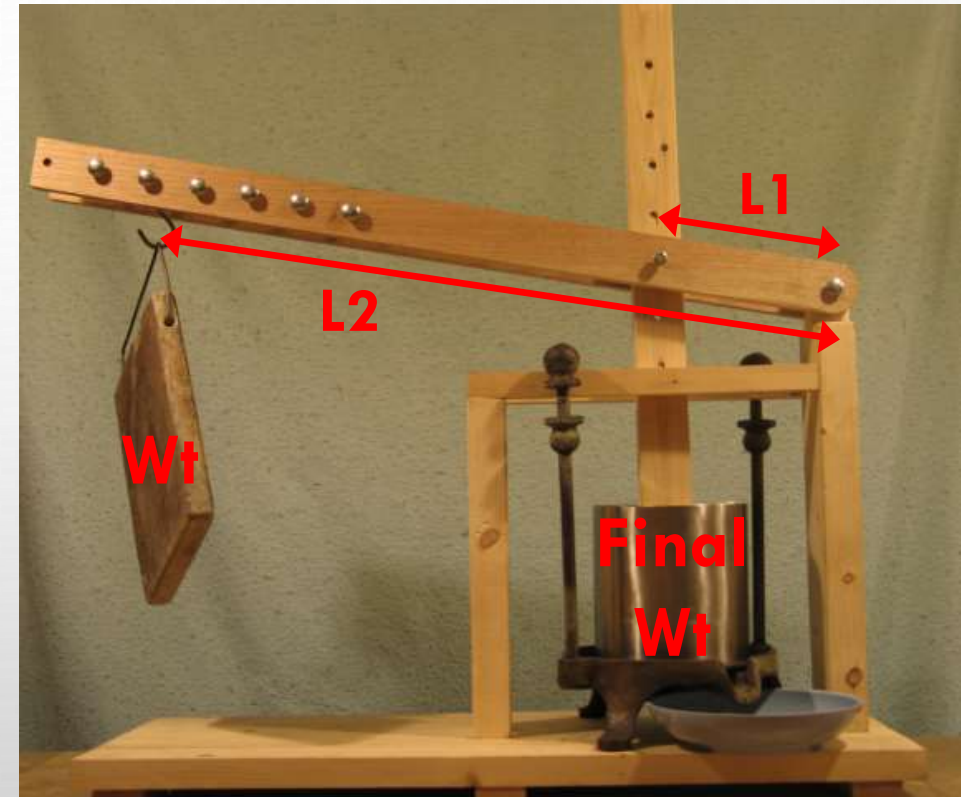
Important to keep level

Plastic for easy cleaning



MECHANICAL ADVANTAGE PRESSES

- DUTCH PRESS
- USES THE LAW OF LEVERS TO INCREASE THE WEIGHT AT THE FOLLOWER:
$$\text{FINAL WT} = \text{WT}(L2/L1)$$
- IF $L1=5.5''$, $L2=14''$ AND $\text{WT}=10\#$
THEN THE FINAL WT WOULD BE
$$(14/5.5)*10 = 2.5*10 = 25\#$$
- FOR EVERY 1# HUNG THERE WOULD BE 2.5# OF PRESSURE ON THE FOLLOWER



RECIPE PRESSURE

- SOME RECIPES WILL CALL FOR 5# OF PRESSURE, OR 12#, OR WHATEVER.
- WHAT DOES THIS MEAN?
 - POUNDS PER SQUARE INCH?
 - TOTAL POUNDS?
- USUALLY IT MEANS THE AMOUNT OF WEIGHT FOR THE GIVEN SIZE MOLD, NOT PSI

FOR EXAMPLE:

- A GOAT MILK TOMME CALLS FOR AN INITIAL PRESSING OF 15# FOR ONE HR. THIS 2G BATCH WILL BE PRESSED IN ONE SMALL TOMME MOLD WITH A DIAMETER OF 4 ½”
- IF YOU MADE TWO AND STACKED THEM THEN YOU’D USE 15#.
- IF YOU PUT THEM SIDE BY SIDE THEN YOU’D NEED 30# TO GET 15# EACH.
- IF YOU THOUGHT THIS WAS 15PSI THE YOU’D NEED:
 - $(4.5/2)^2 \times \pi \times 15$
 $15.9 \times 15 = 239$ POUNDS..... DOESN’T SEEM RIGHT
- USE THE WEIGHT REQUIRED FOR A STANDARD SIZE MOLD. IF YOU USE A LARGER MOLD THEN SCALE THE WEIGHT BY THE RATIO OF THE AREAS OF THE NEW SIZE TO STANDARD SIZE.

THE END

- THANKS TO JACK FORD AND G (CURDS & WINE) FOR LOANING SOME PIECES TO SHOW.
- NOW, QUESTIONS AND SHOW&TELL TIME